

# 101

C O P E N H A G E N



## **Podium, Mini - Coffee**

Designed by

Kristian Sofus Hansen &  
Tommy Hyldahl

# Podium, Mini - Coffee

---

## Product Description

The Podium, Mini - Coffee offers a sculptural way to showcase treasured objects or small artworks, evoking the refined presentation of a gallery. Inspired by architectural façade details, the carved relief on two opposing sides interacts with natural light to create shifting patterns of shadow.

Finished in a deep, nuanced coffee colour, each piece is hand-painted, giving the surface a textured, unique character with natural variations. The Mini's compact, square shape makes it perfect as a small side table, a standalone decorative plinth, or in combination with the Maxi and Medio versions for a balanced, multi-height arrangement.

Finished on all sides, it can be placed freely in a room or positioned neatly against a wall.

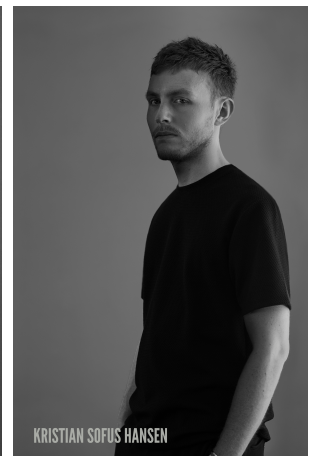
## Designer Description

Tommy Hyldahl and Kristian Sofus Hansen intertwine their distinct sensibilities to create designs where storytelling, materiality, and timeless form meet in quiet harmony.

With a background in fashion, Tommy brings an intuitive eye for trends, colors, and textures. His process is one of layering histories, blending details and references from past design periods and reimagining them into something fresh and contemporary. Each collection unfolds as a narrative, evolving from concept to creation, with every element contributing to a greater story.

Kristian, who has lived and studied in Japan, seeks to unite Japanese aesthetics with Danish design, creating a characteristic twist on simplicity itself. His work is defined by the search for subtle, original details that elevate each piece with a unique signature. Drawing inspiration from art and sculpture, his creative process unfolds in new and exciting ways, always striving to craft designs that are both functional and timeless.

Together, they craft design that transcends time, poetic yet practical, expressive yet enduring.



# Podium, Mini - Coffee

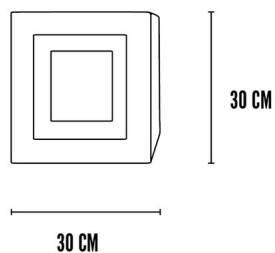
---

## Main

SKU	212021	Product Family	Podium
Product name	Podium, Mini - Coffee	Color	Coffee
Product Type	Podium	Size	Mini
		Unit	Piece

## Logistics

EAN number	4251501406112	Package - CBM	0.064
Package height in cm	40.00	Package - Weight KG	6.500
Package width in cm	40.00	Tariff Code No	9403890090
Package length in cm	40.00	Country of origin	China
Suitable for Courier	Yes	Quantity of Inner Boxes	1



## Podium, Mini - Coffee

---

### Product

Materials	Fiber Concrete	Net weight in kg	5.2
Item Height in cm	30.00	Space Suitability	Indoor
Item width in cm	30.00	Strength Test	N/A
Item length in cm	30.00	FSC Wood	N/A

### Upholstery

Fabric		Cigarette Test - CAL-117
Martindale	N/A	Cigarette Test - EN 1021-1
Colour Fastness to Light		Cigarette Test - BS5852 Part 1
Pilling		Match Flame Test - EN 1021-2
Oeko Tex		Ignition Source 5 (Crib 5) - BS 5852 Part 2
Fire Test Foam	N/A	NF P92-507 - Class M1

## Podium, Mini - Coffee

---

### Family Description Text

Podium is a sculptural platform that brings the quiet presence of a gallery into the home. Both stage and architecture, it offers a place where objects of meaning can be elevated and celebrated.

Inspired by the raw clarity of Brutalism and the ornamental language of façades, its carved reliefs capture and release the light, casting shifting shadows that move with the day. In this dialogue with time, Podium itself becomes a living artwork.

Freed from the notion of a backside, it inhabits space with quiet confidence, standing at the center of a room or resting gracefully against a wall.

Podium exists in two distinct expressions, each revealing its own character.

In fiber concrete, it is cast and hand-painted to a refined finish, embodying both strength and delicacy. It frames beauty with restraint while holding a presence entirely its own.

In natural stone, its character deepens. Smooth planes meet hand-carved reliefs, two sides serene and two alive with gesture. Here, stillness and movement coexist as precision yields to texture and structure dissolves into ornament.

Different in material yet united in spirit, both versions meditate on form and light, on permanence and transformation, celebrating how matter, time, and touch create something quietly monumental.

### Color Description

Hand-painted in a deep, warm dark brown, this shade evokes the richness of earth and roasted beans. Its grounded elegance lends both warmth and depth, while brush stroke variations bring gentle shifts in tone and texture, making each piece entirely unique.

## Maintenance Guide Description

Hand-painted fiber concrete is strong and resilient, yet its artisanal finish requires thoughtful care. Dust surfaces regularly with a soft cloth, and for routine cleaning, use a damp cloth with mild, pH-neutral soap, then dry thoroughly. Avoid abrasive pads, solvents, or acidic and alkaline cleaners, as these can damage the hand-painted layer.

Always protect surfaces with coasters, mats, or felt pads to prevent scratches, stains, and heat marks. Wipe spills immediately to reduce the risk of absorption, and avoid prolonged exposure to standing water. To preserve its finish, keep furniture away from direct sunlight, high humidity, and extreme temperature changes.

With simple, mindful care, hand-painted fiber concrete furniture will maintain its unique character, depth, and elegance for years to come.

## Materials Description

Hand-painted fiber concrete combines strength with artistry, transforming an industrial material into a refined surface for pieces that enrich the home. Reinforced with fibers for durability, it offers resilience against everyday use while remaining lightweight and versatile. Each piece is painted by hand, creating subtle variations in tone and texture that make every surface unique.

The result is a finish that balances raw honesty with crafted detail, bringing depth, character, and individuality to contemporary interiors.