

# 101

C O P E N H A G E N



## **Makura Pillow 11 - Sandshell (Sheepskin)**

Designed by

Kristian Sofus Hansen &  
Tommy Hyldahl

# Makura Pillow 11 - Sandshell (Sheepskin)

---

## Product Description

The back cushion softens the sculptural strength of the Brutus lounge chairs, adding both comfort and contrast to their bold architectural form. Thoughtfully designed to complement the raw fiber concrete and natural oak finishes, the cushion transforms the chair into a more inviting and tactile experience.

Made in exclusive Merino Sheepskin, the cushion enhances both the visual appeal and the sensory experience of the chair. The Merino Sheepskin, in its warm Sandshell hue and soft matte sheen, brings a sense of quiet luxury plush and enveloping, with natural lanolin that softens the wool over time while offering a protective, easy-care surface.

Striking a delicate balance between structure and softness, the back cushion enriches the Brutus lounge chair's sculptural presence while elevating comfort a subtle dialogue between bold form and gentle support.

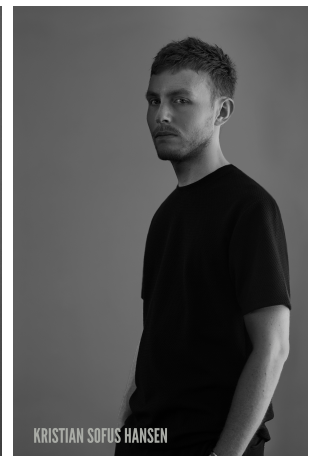
## Designer Description

Tommy Hyldahl and Kristian Sofus Hansen intertwine their distinct sensibilities to create designs where storytelling, materiality, and timeless form meet in quiet harmony.

With a background in fashion, Tommy brings an intuitive eye for trends, colors, and textures. His process is one of layering histories, blending details and references from past design periods and reimagining them into something fresh and contemporary. Each collection unfolds as a narrative, evolving from concept to creation, with every element contributing to a greater story.

Kristian, who has lived and studied in Japan, seeks to unite Japanese aesthetics with Danish design, creating a characteristic twist on simplicity itself. His work is defined by the search for subtle, original details that elevate each piece with a unique signature. Drawing inspiration from art and sculpture, his creative process unfolds in new and exciting ways, always striving to craft designs that are both functional and timeless.

Together, they craft design that transcends time, poetic yet practical, expressive yet enduring.



# Makura Pillow 11 - Sandshell (Sheepskin)

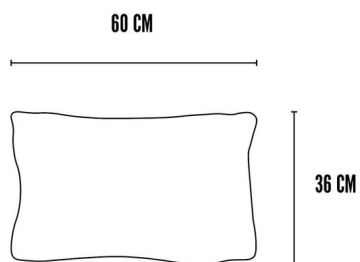
---

## Main

SKU	253028	Product Family	Makura
Product name	Makura Pillow 11 - Sandshell (Sheepskin)	Color	Sandshell
Product Type	Pillow	Size	Regular
		Unit	Piece

## Logistics

EAN number	4251501413837	Package - CBM	0.027
Package height in cm	12.00	Package - Weight KG	2.200
Package width in cm	37.00	Tariff Code No	9404909000
Package length in cm	61.00	Country of origin	India
Suitable for Courier	Yes	Quantity of Inner Boxes	1



## Makura Pillow 11 - Sandshell (Sheepskin)

---

### Product

Materials	Merino Sheepskin	Net weight in kg	1.6
Item Height in cm	11.00	Space Suitability	
Item width in cm	36.00	Waterproof	No
Item length in cm	60.00	Gift Box	No
		Frostproof	No

## Makura Pillow 11 - Sandshell (Sheepskin)

---

### Family Description Text

The Makura Series is conceived to soften and elevate the sculptural presence of our dining and lounge chairs. Each cushion is precisely tailored to rest in harmony with the chair's bold silhouette, adding ease without diminishing form.

A subtle anti-slip base ensures the cushion remains grounded, allowing comfort and function to exist in seamless balance.

The series also offers a matching pillow, a quiet invitation to sink deeper into rest. Together, the Makura Series becomes a dialogue between structure and softness, stillness and comfort, completing our sculptural seating with understated grace.

### Color Description

A naturally warm sandy beige with unique tonal variations in the wool. The organic shifts in shade give the sheepskin depth and a gentle, inviting character.

# Makura Pillow 11 - Sandshell (Sheepskin)

---

## Maintenance Guide Description

Sheepskin is a natural material prized for its softness, warmth, and luxurious texture. To maintain its beauty, shake or gently brush the surface regularly with a soft pet brush to restore the natural pile and prevent matting. Vacuum occasionally with a low-suction setting and a plain nozzle attachment avoid rotating brushes, which can damage the fibers.

For spills, act quickly: blot with a clean, dry cloth to absorb as much liquid as possible. Avoid rubbing, as this can push moisture deeper into the hide. Allow the area to air-dry naturally, away from direct heat or sunlight. For light soiling, use a damp cloth with lukewarm water and gently dab the area; for more persistent stains, professional cleaning by a specialist in sheepskin is recommended.

Keep sheepskin upholstery away from direct sunlight to prevent fading, and avoid excessive humidity or dampness to protect the hide. With regular care, sheepskin will retain its natural comfort, softness, and timeless appeal for many years.

## Materials Description

Renowned for its natural softness, warmth, and lasting durability, Merino sheepskin from New Zealand brings both comfort and refinement to any interior. Its dense, silky pile creates a plush, supportive texture, while the timeless aesthetic lends subtle luxury and depth. Over time, this living material develops a rich character, balancing practicality with enduring elegance.

The finely crimped Merino wool produces a luxuriously soft yet resilient fleece, designed to feel both inviting and supportive. Crafted to the highest production standards and certified mule sing-free, this sheepskin reflects a commitment to both quality and animal welfare. Naturally enriched with lanolin, the wool carries a protective and self-cleansing quality, making it as easy to care for as it is beautiful.