

# 101

C O P E N H A G E N



## **Makura Cushion 31 - Sand (8047-2)**

Designed by

Kristian Sofus Hansen &  
Tommy Hyldahl

# Makura Cushion 31 - Sand (8047-2)

---

## Product Description

Raw Linen Cushion for Slim Brutus Dining Chairs. Tailored for the Brutus dining chairs, this raw linen cushion enhances both comfort and aesthetic appeal without compromising the sculptural integrity of the design.

The cushion is crafted from natural raw linen, chosen to complement both the rugged texture of fiber concrete and the organic warmth of natural oak of the dining chairs. Its subtle texture and earthy tone enrich the raw beauty of the chairs, adding a soft layer that enhances the seating experience while preserving the collection's clean, architectural presence.

Handmade with care, the cushion fits seamlessly into the seat, ensuring it remains in place while accentuating the unique form of each chair. Designed to evolve alongside the Brutus collection, the raw linen cushion brings refined comfort to these sculptural statement pieces, bridging the gap between architectural precision and inviting tactility.

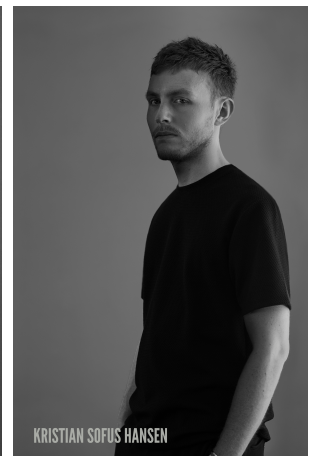
## Designer Description

Tommy Hyldahl and Kristian Sofus Hansen intertwine their distinct sensibilities to create designs where storytelling, materiality, and timeless form meet in quiet harmony.

With a background in fashion, Tommy brings an intuitive eye for trends, colors, and textures. His process is one of layering histories, blending details and references from past design periods and reimagining them into something fresh and contemporary. Each collection unfolds as a narrative, evolving from concept to creation, with every element contributing to a greater story.

Kristian, who has lived and studied in Japan, seeks to unite Japanese aesthetics with Danish design, creating a characteristic twist on simplicity itself. His work is defined by the search for subtle, original details that elevate each piece with a unique signature. Drawing inspiration from art and sculpture, his creative process unfolds in new and exciting ways, always striving to craft designs that are both functional and timeless.

Together, they craft design that transcends time, poetic yet practical, expressive yet enduring.



# Makura Cushion 31 - Sand (8047-2)

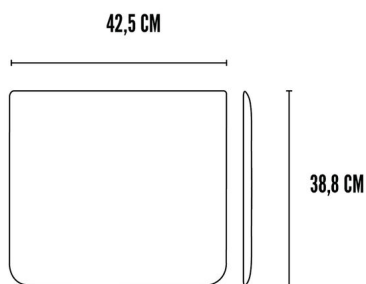
---

## Main

SKU	253023	Product Family	Makura
Product name	Makura Cushion 31 - Sand (8047-2)	Color	Sand (8047-2)
Product Type	Cushion	Size	Regular
		Unit	Piece

## Logistics

EAN number	4251501413783	Package - CBM	0.011
Package height in cm	6.50	Package - Weight KG	2.000
Package width in cm	39.00	Tariff Code No	9404909000
Package length in cm	44.00	Country of origin	China
Suitable for Courier	Yes	Quantity of Inner Boxes	1



## Makura Cushion 31 - Sand (8047-2)

---

### Product

Materials	Linen	Net weight in kg	1.5
Item Height in cm	5.50	Space Suitability	
Item width in cm	38.80	Waterproof	No
Item length in cm	42.50	Gift Box	No
		Frostproof	No

## Makura Cushion 31 - Sand (8047-2)

---

### Family Description Text

The Makura Series is conceived to soften and elevate the sculptural presence of our dining and lounge chairs. Each cushion is precisely tailored to rest in harmony with the chair's bold silhouette, adding ease without diminishing form.

A subtle anti-slip base ensures the cushion remains grounded, allowing comfort and function to exist in seamless balance.

The series also offers a matching pillow, a quiet invitation to sink deeper into rest. Together, the Makura Series becomes a dialogue between structure and softness, stillness and comfort, completing our sculptural seating with understated grace.

### Color Description

Sand is named for its warmth but in appearance is closer to the true natural color of raw linen. With a soft, undyed beige-grey tone, it reflects the fabric in its pure state. Subtle variations in shade add organic depth, while the raw finish gives it an understated, timeless elegance.

### Maintenance Guide Description

Linen upholstery is a natural, durable fabric that softens beautifully with time. To maintain its appearance, vacuum the surface regularly with a soft brush attachment to remove dust and prevent particles from embedding in the weave. In case of spills, blot gently with a clean, dry cloth never rub, as this may spread the stain or damage the fibers. For stubborn marks, use a mild fabric-specific upholstery cleaner and always test on an inconspicuous area first. Professional upholstery cleaning is recommended for a deeper refresh when needed. Protect the fabric from direct sunlight to prevent fading and avoid prolonged exposure to moisture. With thoughtful care, linen upholstery will preserve its natural elegance, warmth, and comfort for years to come.

### Materials Description

100% Linen is a natural fiber celebrated for its exceptional durability and timeless beauty. Strong and resistant to wear, it is designed to endure while retaining its elegance. Soft to the touch with a subtle, tactile texture, linen adds depth and visual interest to any interior. Its organic character and natural warmth bring a sense of comfort and authenticity, making it a fabric that grows more beautiful with use and time.