

101

C O P E N H A G E N



Katachi Vase, Big - Clear

Designed by

Kristian Sofus Hansen &
Tommy Hyldahl

Katachi Vase, Big - Clear

Product Description

Katachi, meaning "shape" in Japanese, explores the delicate balance between light, shadow, and form.

Made from mouth-blown glass, each vase features an irregular surface that subtly distorts and refracts light, casting shifting reflections and soft shadows throughout the day.

The sculptural silhouette is both organic and precise, inviting movement and visual curiosity from every angle. The clear vase offers airy and transparent expression.

The Katachi vase is designed to be displayed alone or grouped in the different sizes to create a serene, architectural arrangement. Whether filled with branches, floral arrangements or left empty, they bring a quiet sense of poetry and presence to any space.

The Katachi Vase is well-suited for display on dining tables, sideboards, or windowsills where natural light can highlight its shifting reflections. Grouped in varying sizes, it creates a striking centerpiece for a large table while a single big vase can be placed directly on the floor adding sculptural elegance to any space.

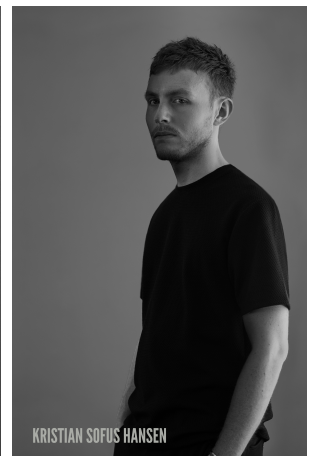
Designer Description

Tommy Hyldahl and Kristian Sofus Hansen intertwine their distinct sensibilities to create designs where storytelling, materiality, and timeless form meet in quiet harmony.

With a background in fashion, Tommy brings an intuitive eye for trends, colors, and textures. His process is one of layering histories, blending details and references from past design periods and reimagining them into something fresh and contemporary. Each collection unfolds as a narrative, evolving from concept to creation, with every element contributing to a greater story.

Kristian, who has lived and studied in Japan, seeks to unite Japanese aesthetics with Danish design, creating a characteristic twist on simplicity itself. His work is defined by the search for subtle, original details that elevate each piece with a unique signature. Drawing inspiration from art and sculpture, his creative process unfolds in new and exciting ways, always striving to craft designs that are both functional and timeless.

Together, they craft design that transcends time, poetic yet practical, expressive yet enduring.



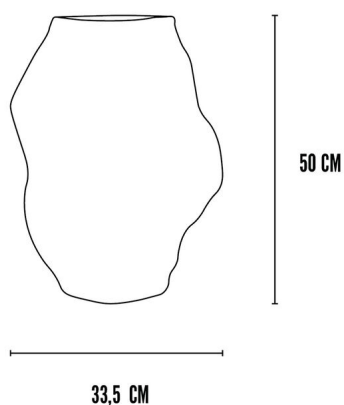
Katachi Vase, Big - Clear

Main

SKU	253015	Product Family	Katachi
Product name	Katachi Vase, Big - Clear	Color	Clear
Product Type	Vase	Size	Big
		Unit	Piece

Logistics

EAN number	4251501413844	Package - CBM	0.107
Package height in cm	58.00	Package - Weight KG	6.980
Package width in cm	43.00	Tariff Code No	7013100000
Package length in cm	43.00	Country of origin	China
Suitable for Courier	Yes	Quantity of Inner Boxes	1



Katachi Vase, Big - Clear

Product

Materials	Glass	Net weight in kg	5.18
Item Height in cm	50.00	Space Suitability	Indoor
Item width in cm	33.50	Waterproof	Yes
Item length in cm	33.50	Gift Box	Yes
		Frostproof	

Katachi Vase, Big - Clear

Family Description Text

In Japanese, Katachi means "shape" a word that captures both the physical form of an object and the deeper idea of how form influences feeling. The Katachi Collection was born from this philosophy, exploring how light, shadow, and surface come together to create quiet moments of beauty.

Each vase is designed as a study in contrast: organic yet precise, raw yet refined. In mouth-blown glass, the irregular surface bends and scatters light, creating soft, shifting reflections that change with the passing day. In high-gloss ceramic, the mirror-like glaze amplifies its surroundings, turning the sculptural form into a play of reflections and shadows.

The inspiration lies in the Japanese appreciation for imperfection, the way irregularities in surface and silhouette invite us to see objects not as static but as alive with movement and atmosphere. Displayed alone, a single Katachi vase becomes a sculptural presence; grouped together, they form serene, architectural compositions.

Whether empty or holding a few simple branches, Katachi vases are more than vessels. They are quiet poems in shape, embodying the balance of stillness and motion, clarity and distortion, refinement and rawness.

Color Description

A pure, transparent option with no tint, offering a crisp and versatile clarity that highlights form and light without altering colour.

Maintenance Guide Description

Though delicate in appearance, the glass is strong and durable, designed for everyday use in decorative and functional objects. To maintain its pristine look, we recommend regular cleaning with a soft microfiber cloth and a gentle glass cleaner or diluted soap solution. Spray the cleaner onto the cloth (not directly on the glass) and wipe in smooth, circular motions. Always dry with a clean cloth to prevent streaks or water marks. Avoid abrasive cleaners, scouring pads, or acidic substances, which can dull or damage the glossy surface. For tables, use coasters or felt pads under objects to prevent scratches or thermal shock from hot items. While the glass is moisture-resistant, it's best to avoid prolonged exposure to standing water or humidity, especially for vases empty and dry them between uses to preserve the finish. Elegant, minimal, and low-maintenance, our glass combines lasting beauty with functional design. With a little care, your table or vase will retain its distinctive charm for years to come.

Materials Description

Our painted glass is created by applying pigment to the inner surface of the glass, a process that preserves the smooth clarity of the outer layer while enriching the material with depth and character. Though visually and tactilely identical to colored glass, the painted finish adds an artisanal dimension, with subtle variations that make each piece unique.

Durable yet refined, painted glass reflects light with the same purity and brilliance as coloured glass, offering a timeless surface that balances precision, craftsmanship, and contemporary expression.