

101

C O P E N H A G E N



Ishi Coffee Tables, Medio - Caramel

Designed by

Kristian Sofus Hansen &
Tommy Hyldahl

Ishi Coffee Tables, Medio - Caramel

Product Description

Named after the Japanese word for "rock," the Ishi Coffee Table, Medio in Caramel is a meditation on stillness and strength, a sculptural form that echoes the quiet poetry of stone shaped by time. With softened edges and an organic silhouette, the piece carries a sense of serenity, balancing minimalism with a grounded, natural presence.

Crafted in painted glass, the surface is finished in a rich Caramel tone, a golden brown infused with soft amber warmth. The colour recalls golden resin and polished amber, catching and reflecting light with luminous depth. Pigment is applied to the inner surface of the glass, preserving the smooth clarity of the exterior while creating a layered, glowing effect. Subtle variations in the finish enhance its artisanal character, ensuring each table is uniquely alive.

The Ishi table moves fluidly through interiors, standing alone as a sculptural statement, serving with quiet elegance as a coffee table, or arranged in clusters that create rhythm and dialogue within a room. More than a functional object, it brings permanence and calm, rooting interiors in beauty, balance, and timeless presence.

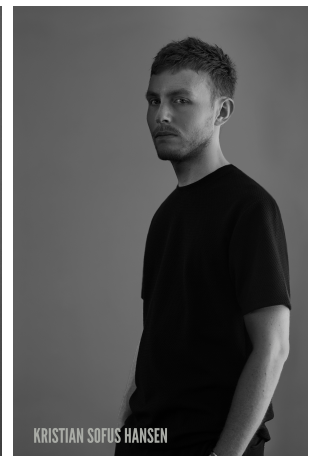
Designer Description

Tommy Hyldahl and Kristian Sofus Hansen intertwine their distinct sensibilities to create designs where storytelling, materiality, and timeless form meet in quiet harmony.

With a background in fashion, Tommy brings an intuitive eye for trends, colors, and textures. His process is one of layering histories, blending details and references from past design periods and reimagining them into something fresh and contemporary. Each collection unfolds as a narrative, evolving from concept to creation, with every element contributing to a greater story.

Kristian, who has lived and studied in Japan, seeks to unite Japanese aesthetics with Danish design, creating a characteristic twist on simplicity itself. His work is defined by the search for subtle, original details that elevate each piece with a unique signature. Drawing inspiration from art and sculpture, his creative process unfolds in new and exciting ways, always striving to craft designs that are both functional and timeless.

Together, they craft design that transcends time, poetic yet practical, expressive yet enduring.



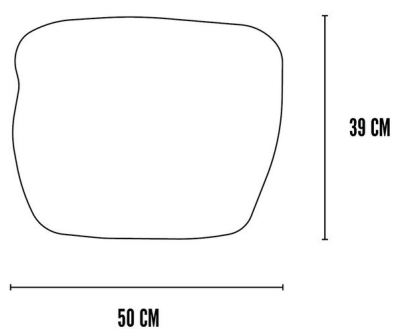
Ishi Coffee Tables, Medio - Caramel

Main

SKU	262041	Product Family	Ishi
Product name	Ishi Coffee Tables, Medio - Caramel	Color	Caramel
Product Type	Coffee Table	Size	Medio
		Unit	Piece

Logistics

EAN number	4251501415169	Package - CBM	0.198
Package height in cm	50.00	Package - Weight KG	17.200
Package width in cm	63.00	Tariff Code No	7013490000
Package length in cm	63.00	Country of origin	China
Suitable for Courier	Yes	Quantity of Inner Boxes	1



Ishi Coffee Tables, Medio - Caramel

Product

Materials	Glass	Net weight in kg	15
Item Height in cm	40.00	Space Suitability	Indoor
Item width in cm	52.00	Strength Test	N/A
Item length in cm	52.00	FSC Wood	Yes

Upholstery

Fabric		Cigarette Test - CAL-117
Martindale	N/A	Cigarette Test - EN 1021-1
Colour Fastness to Light		Cigarette Test - BS5852 Part 1
Pilling		Match Flame Test - EN 1021-2
Oeko Tex		Ignition Source 5 (Crib 5) - BS 5852 Part 2
Fire Test Foam	N/A	NF P92-507 - Class M1

Ishi Coffee Tables, Medio - Caramel

Family Description Text

Named after the Japanese word for "rock", the Ishi Collection is a meditation on stillness and strength, sculptural forms that echo the quiet poetry of stone shaped by time. With softened edges and organic silhouettes, each piece carries a sense of serenity, balancing minimalism with a grounded, natural presence.

The collection is expressed in two distinct materials, each with its own voice. In glass, Ishi radiates with luminous depth, its layered hues shifting gently with the light. In ceramic, it reveals a more tactile beauty, hand-painted and finished in a high-gloss glaze, alive with subtle variations that make every piece unique.

The Ishi Collection moves fluidly through interiors, standing alone as a sculptural statement, serving with quiet elegance as a table, or arranged in clusters that create rhythm and dialogue within a room. More than functional objects, these works bring permanence and calm, rooting interiors in beauty, balance, and timeless presence.

Color Description

A rich, golden brown hue infused with a soft amber warmth, Caramel radiates natural depth and quiet grace. Its tone recalls the golden resin that seeps from tree bark, catching the light like liquid caramel. Smooth and luminous, it carries the earthy richness of aged wood and the gentle glow of polished amber. Both warm and refined, Caramel brings a comforting elegance to any palette, a color that feels rooted in nature and timeless in spirit.

Maintenance Guide Description

Though delicate in appearance, the glass is strong and durable, designed for everyday use in decorative and functional objects. To maintain its pristine look, we recommend regular cleaning with a soft microfiber cloth and a gentle glass cleaner or diluted soap solution. Spray the cleaner onto the cloth (not directly on the glass) and wipe in smooth, circular motions. Always dry with a clean cloth to prevent streaks or water marks. Avoid abrasive cleaners, scouring pads, or acidic substances, which can dull or damage the glossy surface. For tables, use coasters or felt pads under objects to prevent scratches or thermal shock from hot items. While the glass is moisture-resistant, it's best to avoid prolonged exposure to standing water or humidity, especially for vases empty and dry them between uses to preserve the finish. Elegant, minimal, and low-maintenance, our glass combines lasting beauty with functional design. With a little care, your table or vase will retain its distinctive charm for years to come.

Materials Description

Our painted glass is created by applying pigment to the inner surface of the glass, a process that preserves the smooth clarity of the outer layer while enriching the material with depth and character. Though visually and tactilely identical to colored glass, the painted finish adds an artisanal dimension, with subtle variations that make each piece unique.

Durable yet refined, painted glass reflects light with the same purity and brilliance as coloured glass, offering a timeless surface that balances precision, craftsmanship, and contemporary expression.