

101

C O P E N H A G E N



Arc Dining Table, Ø120 - Coffee Black Oak

Designed by

Kristian Sofus Hansen &
Tommy Hyldahl

Arc Dining Table, Ø120 - Coffee Black Oak

Product Description

As an ode to the Art Deco period, the Arc Dining Table transforms lavish architectural details into minimalist furniture forms.

Characterized by sculptural steps and arches, each table creates depth and a play of shadows that nods to classical architecture with a contemporary edge. The round dining table is perfect for intimate dining settings.

The tabletop is crafted from solid oak with a lacquered finish in the deep colour Coffee Black, adding warmth, tactility, and elegance. This refined surface contrasts beautifully with the bold, architectural base, made from cast fiber concrete and hand-painted to achieve a complementary coffee tone. With its sculptural presence and refined detailing, the Arc Dining Table is a lasting statement piece - one that feels both timeless and distinctly elegant in any setting.

Perfectly suited to the Brutus Dining Chairs, the Arc Dining Table enhances a bold and refined brutalist aesthetic. It also pairs beautifully with the Nama or Hiro Dining Chairs, offering a more contemporary and versatile expression.

Each table comes in two parts, top and base, and is easily assembled with a few screws hidden beneath the tabletop.

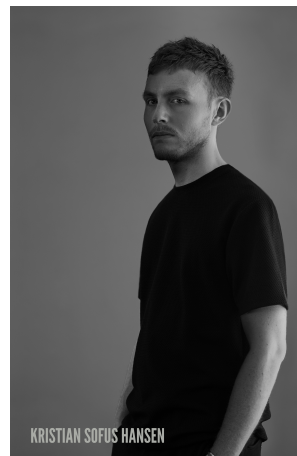
Designer Description

Tommy Hyldahl and Kristian Sofus Hansen intertwine their distinct sensibilities to create designs where storytelling, materiality, and timeless form meet in quiet harmony.

With a background in fashion, Tommy brings an intuitive eye for trends, colors, and textures. His process is one of layering histories, blending details and references from past design periods and reimagining them into something fresh and contemporary. Each collection unfolds as a narrative, evolving from concept to creation, with every element contributing to a greater story.

Kristian, who has lived and studied in Japan, seeks to unite Japanese aesthetics with Danish design, creating a characteristic twist on simplicity itself. His work is defined by the search for subtle, original details that elevate each piece with a unique signature. Drawing inspiration from art and sculpture, his creative process unfolds in new and exciting ways, always striving to craft designs that are both functional and timeless.

Together, they craft design that transcends time, poetic yet practical, expressive yet enduring.



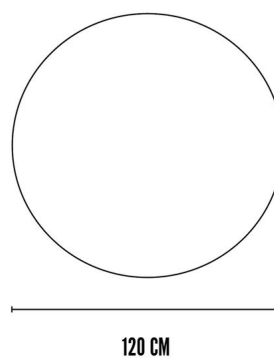
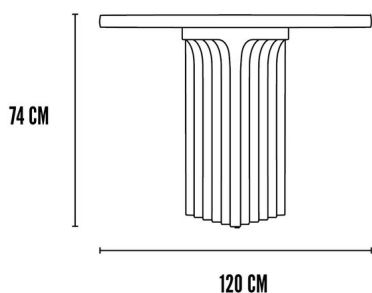
Arc Dining Table, Ø120 - Coffee Black Oak

Main

SKU	261077	Product Family	Arc
Product name	Arc Dining Table, Å~120 - Coffee Black Oak	Color	Coffee Black Oak & Coffee
Product Type	Dining Table	Size	Ø120
		Unit	Piece

Logistics

EAN number	4251501415947	Package - CBM	0.223
Package height in cm	13.00	Package - Weight KG	35.000
Package width in cm	131.00	Tariff Code No	9401690000
Package length in cm	131.00	Country of origin	China
Suitable for Courier	No	Quantity of Inner Boxes	1



Arc Dining Table, Ø120 - Coffee Black Oak

Product

Materials	Oak & Fiber Concrete	Net weight in kg	30
Item Height in cm	74.00	Space Suitability	Indoor
Item width in cm	120.00	Strength Test	N/A
Item length in cm	120.00	FSC Wood	Yes

Upholstery

Fabric		Cigarette Test - CAL-117
Martindale	N/A	Cigarette Test - EN 1021-1
Colour Fastness to Light		Cigarette Test - BS5852 Part 1
Pilling		Match Flame Test - EN 1021-2
Oeko Tex		Ignition Source 5 (Crib 5) - BS 5852 Part 2
Fire Test Foam	N/A	NF P92-507 - Class M1

Arc Dining Table, Ø120 - Coffee Black Oak

Family Description Text

The Arc Collection is an ode to Art Deco, where grand architectural details are distilled into minimalist forms. Sculptural steps and arches create depth and shadow, evoking classical structures with a contemporary edge.

At its core, the collection explores material contrasts. Solid oak, hand painted fiber concrete in nuanced tones, solid fiber concrete, and silver travertine meet in bold dialogue, united by a single sculptural language. Raw textures and elemental forms define each piece, giving the collection strength and clarity.

The Arc Dining Table pairs the warmth of solid oak with the weight of hand painted fiber concrete, creating a centerpiece that is both monumental and refined. The Arc Console is available in two expressions. One combines a base of hand painted fiber concrete with a silver travertine top, merging permanence with delicacy. The other is crafted entirely in solid fiber concrete, offering a more monolithic architectural presence. The Arc Bench, cast fully in hand painted fiber concrete, stands as the purest expression of the series, sculptural and strong. It can be paired with an optional linen cushion to introduce a tactile counterpoint to its raw surface.

Arc is a study in raw beauty. Diverse materials converge without breaking the design language, resulting in a collection that transforms architectural influence into timeless furniture for modern living.

Color Description

This pairing draws its richness from the deepest tones of nature. Coffee Black Oak, dark as midnight with a hidden warmth, is set against the hand-painted depth of Coffee, where brushstrokes reveal earthy variations like the surface of roasted beans. Together, they form a palette of shadow and warmth grounded, soulful, and timeless in character.

Arc Dining Table, Ø120 - Coffee Black Oak

Maintenance Guide Description

This table combines the natural warmth of oak with the sculptural strength of a hand-painted fiber concrete base. Each element requires mindful care to preserve its beauty and integrity.

For the oak tabletop, dust regularly with a soft, dry cloth. For deeper cleaning, wipe with a slightly damp cloth following the wood grain, then dry immediately. Avoid abrasive cleaners, silicone-based polishes, or excess water, as these may damage the surface. Protect the tabletop with coasters, mats, or placemats to guard against stains, scratches, and heat marks, and wipe spills promptly. Keep the wood away from direct sunlight, high humidity, or heat sources to prevent fading, cracking, or warping.

For the hand-painted fiber concrete base, clean with a soft, dry cloth or a damp cloth with mild, pH-neutral soap as needed. Dry thoroughly after cleaning to avoid moisture spots. Do not use abrasive pads, harsh chemicals, or acidic/alkaline cleaners, which may damage the painted finish. Avoid prolonged exposure to standing water or extreme environmental conditions to maintain the surface's integrity.

With proper care, the oak tabletop will grow richer in character and the hand-painted concrete base will retain its crafted depth, ensuring the table ages with grace and enduring presence.

Materials Description

This combination unites the natural warmth of American Red Oak with the crafted strength of hand-painted fiber concrete. Responsibly sourced and FSC-certified, the oak reveals its story through every grain tight, resilient, and warm in tone maturing over time into a rich patina that reflects years of use and care. Its stability and strength allow it to be shaped into bold lines, soft curves, and details that highlight its natural elegance.

Balancing this organic character, hand-painted fiber concrete introduces a refined rawness. Reinforced with fibers for durability, each surface is painted by hand, creating subtle variations in tone and texture that make every piece unique. Its artisanal finish adds depth and individuality, transforming a functional material into a crafted surface with sculptural presence.

Together, oak and fiber concrete create a dialogue of contrasts warm and cool, organic and architectural, enduring and crafted resulting in furniture that is both grounded and expressive, designed to age gracefully with time.