

101

C O P E N H A G E N



Drop Wall Lamp Bulp - Grey

Designed by

Kristian Sofus Hansen &
Tommy Hyldahl

Drop Wall Lamp Bulb - Grey

Product Description

Embodying the exquisite allure of the Drop Chandelier Collection, the Drop Wall Lamp effortlessly blends decorative charm with functionality.

Crafted with meticulous attention to detail, this lamp mirrors the elegant lighting fixtures and circular opal glass lampshades of its counterpart, the Drop Chandelier.

Radiating a captivating glow, the Drop Wall Lamp not only illuminates the space with grace but also transforms into a captivating sculptural masterpiece adorning the wall.

Its seamless integration of form and function is a testament to the visionary design ethos of Kristian Sofus Hansen & Tommy Hyldahl.

Illuminate your surroundings with sophistication and style, as the Drop Wall Lamp transcends mere illumination to become a statement piece, infusing every corner with warmth and ambiance.

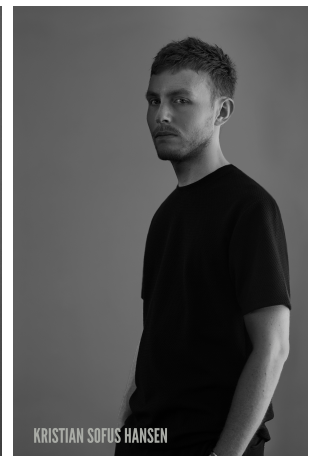
Designer Description

Tommy Hyldahl and Kristian Sofus Hansen intertwine their distinct sensibilities to create designs where storytelling, materiality, and timeless form meet in quiet harmony.

With a background in fashion, Tommy brings an intuitive eye for trends, colors, and textures. His process is one of layering histories, blending details and references from past design periods and reimagining them into something fresh and contemporary. Each collection unfolds as a narrative, evolving from concept to creation, with every element contributing to a greater story.

Kristian, who has lived and studied in Japan, seeks to unite Japanese aesthetics with Danish design, creating a characteristic twist on simplicity itself. His work is defined by the search for subtle, original details that elevate each piece with a unique signature. Drawing inspiration from art and sculpture, his creative process unfolds in new and exciting ways, always striving to craft designs that are both functional and timeless.

Together, they craft design that transcends time, poetic yet practical, expressive yet enduring.



Drop Wall Lamp Bulp - Grey

Main

SKU	203042	Product Family	Drop
Product name	Drop Wall Lamp Bulp - Grey	Color	Grey
Product Type	Wall Lamp	Size	Regular
		Unit	Piece

Logistics

EAN number	4251501405665	Package - CBM	0.041
Package height in cm	21.00	Package - Weight KG	2.500
Package width in cm	30.00	Tariff Code No	9405199090
Package length in cm	66.00	Country of origin	China
		Quantity of Inner Boxes	1



Drop Wall Lamp Bulp - Grey

Product

Materials	Hand-Brushed Plated Aluminium & Matt Porcelain	Light Source	E14
Item Height in cm	66	Lighting Certification	CE-Certificate
Item width in cm	18	Cable Length	2 m
Item length in cm	18	Max Watt (W)	8
Net weight in kg	2	Socket	E14 x 2 - 230V
Ceiling Cup Size		IP Rating	20

Led

Color Temperature		Lumen (lm)	N/A
Energy Class	N/A	Illuminant Lifetime (h)	N/A
EPREL No.	N/A	Driver Type	N/A

Drop Wall Lamp Bulb - Grey

Family Description Text

The Drop Bulb Series is a refined fusion of modern minimalism and classic Art Deco design. Characterized by perfectly round glass shades, each piece emits a soft, diffused glow that fills the room with a warm and inviting atmosphere.

The purity of the spherical lampshades contrasts elegantly with the sleek metal structure, striking a balance between simplicity and sophistication. Inspired by the grandeur of Art Deco chandeliers yet stripped of unnecessary ornamentation, the Drop Bulb Series distills timeless aesthetics into clean lines, balanced proportions, and effortless elegance.

Available as both chandeliers and wall lamp, the collection is designed to adapt seamlessly to a variety of interiors. In the chandelier, its fluid, organic form comes to life through 14 flexible, adjustable arms, allowing for endless compositions, angles, and expressions. The carefully composed arrangement of metal arms and glass spheres creates not only a functional light source but also a sculptural element, making each piece as visually striking as it is practical.

Whether enhancing living spaces, dining rooms, or open interiors, the Drop Bulb Series offers a harmonious blend of vintage glamour and contemporary minimalism. It is an understated statement that feels timeless, versatile, and sophisticated.

Color Description

Grey Hand-Brushed reveals a cool, muted grey tone enhanced by fine, linear hand-brushing. The subtle texture gives the metal surface depth and movement, balancing sleek metallic clarity with a refined, tactile warmth. Versatile and understated, this finish offers contemporary elegance that adapts seamlessly to both modern and timeless settings.

Drop Wall Lamp Bulb - Grey

Maintenance Guide Description

Our lights are crafted with refined finishes that balance tactile warmth with timeless elegance. To preserve their beauty and ensure lasting quality, regular and careful maintenance is essential.

The Hand-Brushed plated aluminium should be cleaned with a soft microfiber cloth, removing dust gently along the direction of the brushing to maintain its subtle texture. For deeper cleaning, a slightly damp cloth with mild, pH-neutral soap may be used, followed by a dry wipe. Avoid abrasive pads, acidic solutions, or metal polishes, as these can damage the plated surface and alter its refined appearance.

The Matt Porcelain (opal glass) requires equally gentle care. Its velvety matte surface can be dusted with a microfiber cloth or cleaned with warm water and mild soap. Always dry immediately with a lint-free cloth to prevent water marks, and avoid ammonia-based cleaners or abrasive sponges, which may scratch or dull the finish. Though strong, the porcelain should be handled with care to prevent chipping or scratching.

For both materials, always switch off and unplug the lamp before cleaning, and avoid exposing it to excessive humidity or direct contact with water. With simple, regular care, the Hand-Brushed plated aluminium will retain its contemporary elegance, and the Matt Porcelain will preserve its soft, radiant glow ensuring the lamp remains refined and timeless for years to come.

Materials Description

Our lights combine the tactile refinement of hand-brushed plated aluminium with the soft radiance of matt porcelain. Together, these materials balance warmth and clarity, strength and delicacy crafted finishes that elevate both light and form.

Hand-brushed plated aluminium is defined by its subtle linear texture, created through careful brushing that gives the surface depth and character. Its finish reflects both resilience and craftsmanship, catching light with quiet movement and maintaining a refined contemporary elegance.

Matt porcelain (opal glass) introduces a velvety translucence, diffusing light into a soft, atmospheric glow. Its smooth matte surface carries both strength and fragility, its understated finish lending a timeless calmness to the piece.

When combined, these materials form a dialogue of texture and tone the cool precision of brushed metal meeting the gentle luminosity of porcelain resulting in lighting that feels both sculptural and enduring.